



## 10 MACHINE COMPONENTS

### 10.1 - List of spare parts

REFERENCE N°	DESCRIPTION	REFERENCE N°	DESCRIPTION
1	Machine bed	39	Hinge pin bush
2	Revolving arm	40	Head lever
3	Revolving arm locking pin	41	Nut M16
4	Revolving arm locking bush	42	Head lever handgrip
5	Revolving arm locking lever	43	Ring SM 30-40-7
6	Screw M8	44	3/8" gas oil drainage cap
7	Pin	45	Blade shaft
8	Countervise	46	Blade
9	Grain M8	47	Blade shaft flange stakes
10	Bar stop rod	48	Shaft flange stakes
11	Bar stop	49	Screw TCCE M12x30 l.h.
12	Vice	50	Fixed blade guard
13	Vice jaw	51	Grain M16
14	Screw M12	52	Coolant tube
15	Jaw washer	53	Mobile blade guard
16	Screw M12	54	Ring seeger Ø 60 E
17	Oiler Ø 5	55	Pin
18	Vice handwheel	56	Screw M6
19	Pin Ø 6	57	Tie rod
20	Vice thread	58	Ring seeger Ø 10 E
21	Burr-free transverse plate	59	Tie rod support pin
22	Screw M8	60	Tie rod support
23	Burr-free plate	61	Plug
24	Seal filter support flange	62	Screw M8
25	Ring seeger Ø 42 l	63	Worm wheel
26	Tank cover filter	64	Grain M8
27	Filter support flange	65	Worm wheel retaining washer
28	Screw M5	66	Screw M12
29	Washer	67	Bearing 6301
30	Coolant tap	68	GUK ring nut M15x1
31	Coolant tube	69	Bearing 3204
32	Screw M6	70	Mobile front flange
33	Tank filter	71	Stud bolt
34	Screw M8	72	Washer
35	Hinge pin washer	73	Nut M6
36	Hinge pin	74	DPSM ring 25477
37	Head return spring bottom connection	75	Motor shaft (rotor)
38	Oiler Ø 8	76	Key 6x5x35

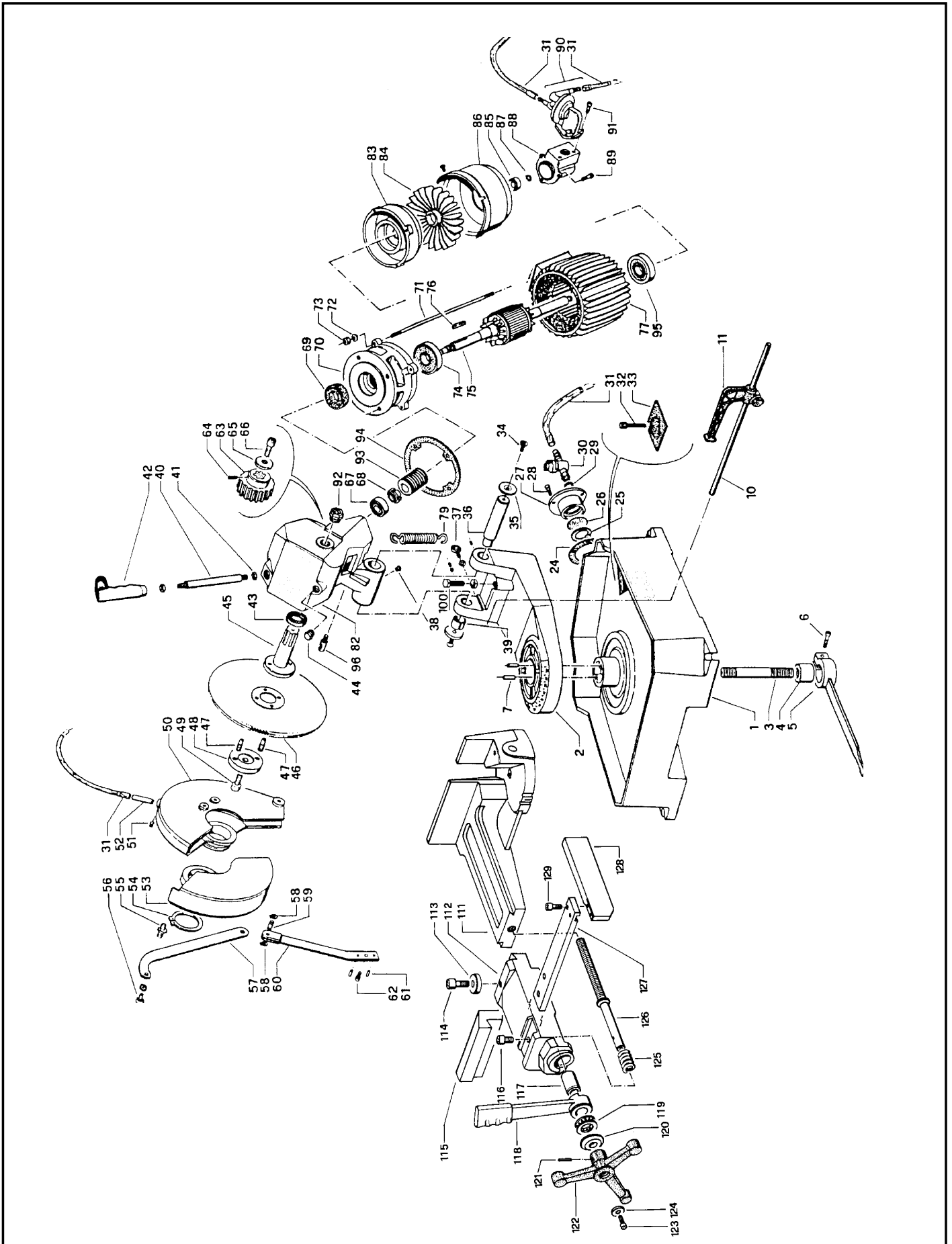


REFERENCE N°	DESCRIPTION
--------------	-------------

77	Motor housing and stator
78	
79	Head return spring
80	
81	
82	Head
83	Motor rear flange
84	Fan
85	Bearing 609 2Z
86	Fan cover
87	Ring seeger Ø 9E
88	Pump connection box
89	Screw M6
90	Coolant pump
91	Screw M6
92	Oil level-drain plug
93	Worm screw
94	Head gasket
95	Bearing 6205 2ZR
96	Spring top connection
97	Washer
98	Screw M8
99	Grain M6
100	Ring seeger Ø 25E
101	Ring seeger Ø 47I
102	Worm spacer
103	Screw M10
104	Bar stop

REFERENCE N°	DESCRIPTION
--------------	-------------

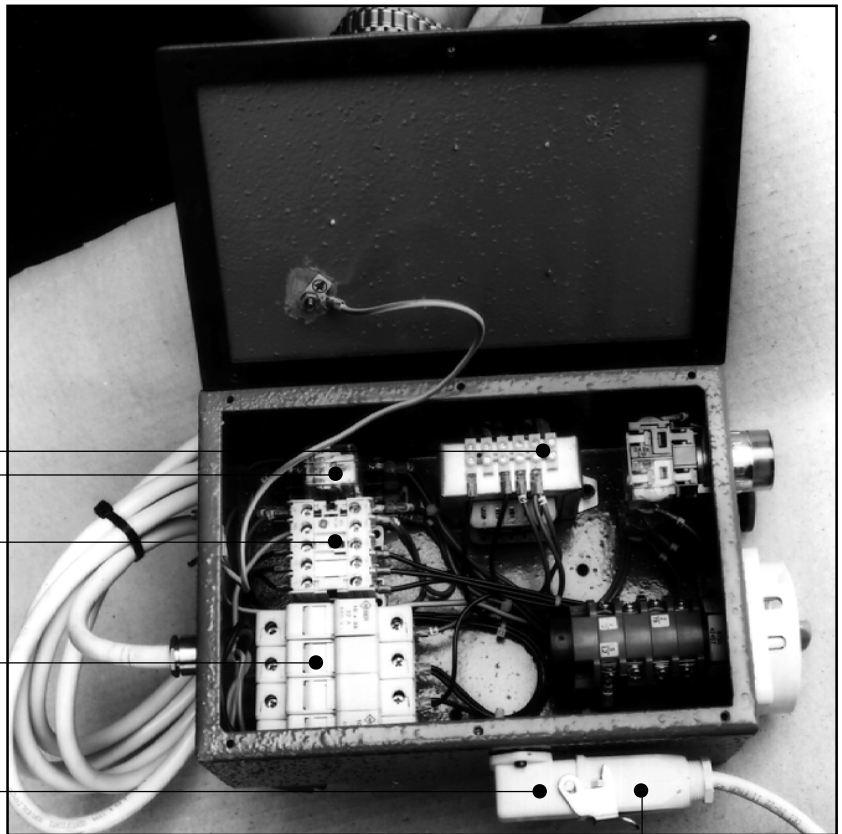
QUICK LOCK VICE	
111	Countervise
112	Quick lock vice
113	Jaw washer
114	Screw M12
115	Vice jaws
116	Screw M12
117	Quick lock vice lever bush
118	Quick lock vice lever
119	Bearing 51106
120	Quick lock vice lever washer
121	Plug Ø 6
122	Vice closing handwheel
123	Screw M8
124	Washer
125	Quick lock vice spring
126	Quick lock vice thread
127	Anti-burr transverse plate
128	Anti-burr plate
129	Screw M8



**KEY**

- 130 Auxiliary relay
- 131 Remote-control switch
- 132 Fuse carrier
- 133 Transformer
- 134 Socket connector
- 135 Plug connector

- 133
- 130
- 131
- 132
- 134
- 135



- 137

- 140 141

- 136
- 138
- 139

**KEY**

- 136 Speed switch
- 137 Reset button
- 138 Emergency button
- 139 Electric components box
- 140 Box cover
- 141 Box gasket

