



## 10 MACHINE COMPONENTS

### 10.1 - List of spare parts

| REFERENCE N° | DESCRIPTION                         | REFERENCE N° | DESCRIPTION              |
|--------------|-------------------------------------|--------------|--------------------------|
| 1            | Machine bed                         | 38           | Burr-free plate          |
| 2            | Revolving arm                       | 39           | Grain M8                 |
| 3            | Revolving arm locking pin           | 40           | Screw M8                 |
| 4            | Revolving arm locking bush          | 41           | Tank filter              |
| 5            | Revolving arm locking lever         | 42           | Screw M6                 |
| 6            | Screw M8                            | 43           | Bar stop rod             |
| 7            | Countervice                         | 44           |                          |
| 8            | Pin                                 | 45           |                          |
| 9            | Countervice jaws                    | 46           | Bar stop                 |
| 10           | Burr-free jaws                      | 48           | Screw M8                 |
| 11           | Countervice fixing pin              | 49           | Support tank cover       |
| 12           | Roller arm                          | 50           | Ring seeger Ø 42 I       |
| 13           | Roller                              | 51           | Tank cover filter        |
| 14           | Washer M10                          | 52           | Tank cover filter        |
| 15           | Vite M10                            | 53           | Tank cover               |
| 16           |                                     | 54           | Washer                   |
| 17           | Vice                                | 55           | 1/4" gas tap             |
| 18           | Vice jaws                           | 56           | Coolant tube             |
| 19           | Vice jaws washer                    | 57           | Oiler Ø 8                |
| 20           | Screw M12                           | 58           | Return spring connection |
| 21           | Vice jaws washer                    | 59           | Head return spring       |
| 22           | Screw M12                           | 60           | Nut M12                  |
| 23           | Grain M8                            | 61           | Screw M12                |
| 24           | Lever bush                          | 62           | Head                     |
| 25           | Quick lock vice lever               | 63           | plug                     |
| 26           | Thrust bearing AX 3047<br>+ CP 3047 | 64           | Oil level plug           |
| 27           | Quick lock vice lever washer        | 65           | Oil drain plug           |
| 28           | Vice closing handwheel Ø 18         | 66           | Screw M10                |
| 29           | Elastic pin Ø 5                     | 67           | Hinge pin                |
| 30           | Washer                              | 68           | Hinge pin washer         |
| 31           | Screw M8                            | 69           | Hinge pin bush           |
| 32           |                                     | 70           | Grain M8                 |
| 33           |                                     | 71           | Nut M8                   |
| 34           |                                     | 72           | Nut M16                  |
| 35           | Vice thread                         | 73           | Head lever               |
| 36           | Lock vice spring                    | 74           | Head lever handgrip      |
| 37           | Burr-free transverse plate          | 75           | GUK ring nut M25x1,5     |
|              |                                     | 76           | Worm wheel               |

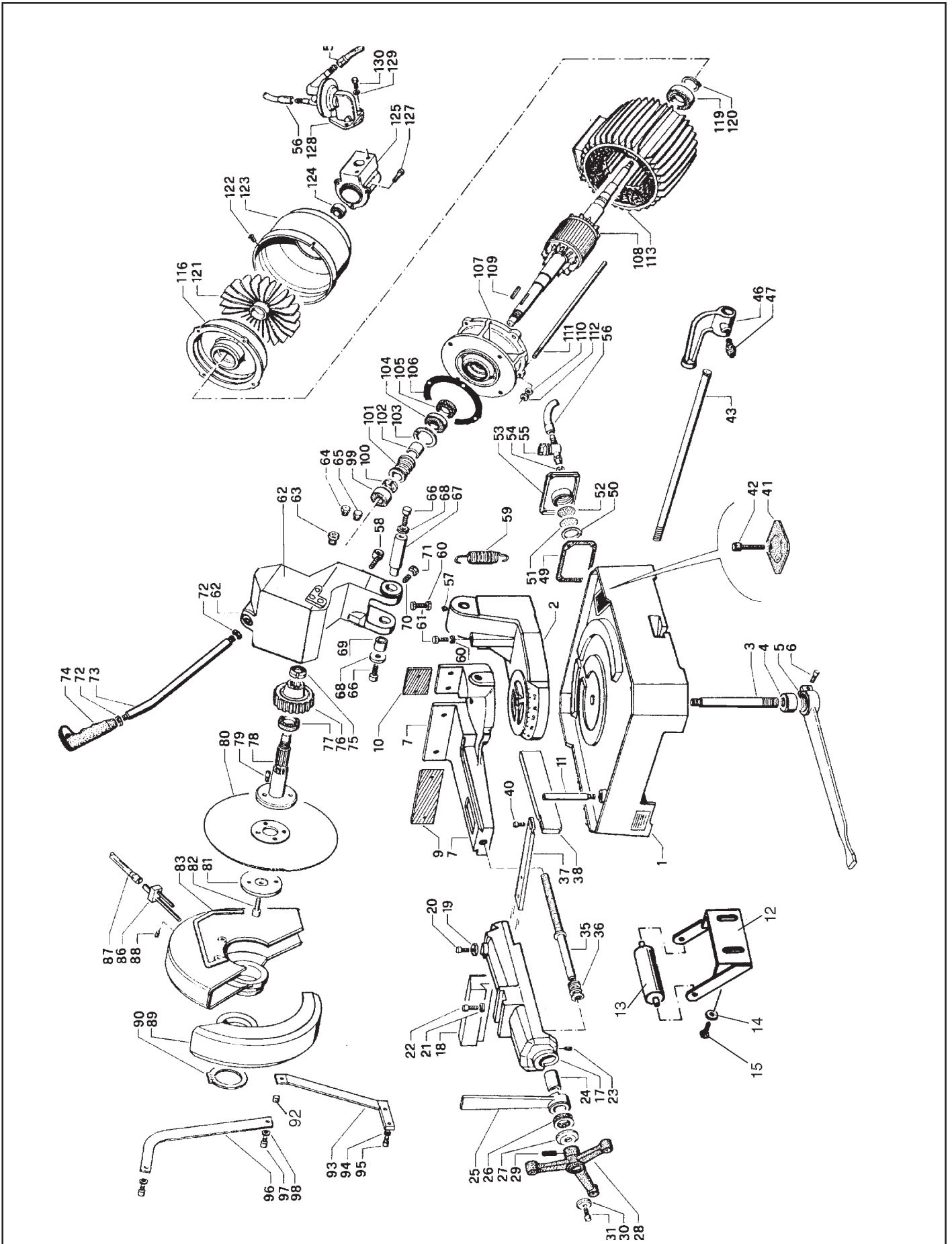


| REFERENCE N° | DESCRIPTION |
|--------------|-------------|
|--------------|-------------|

|     |                         |
|-----|-------------------------|
| 77  | Ring SM 35-47-7         |
| 78  | Blade shaft             |
| 79  | Pin                     |
| 80  | Blade                   |
| 81  | Shaft flange stakes     |
| 82  | Screw M12               |
| 83  | Fixed blade guard       |
| 84  |                         |
| 85  |                         |
| 86  | Coolant distributor     |
| 87  | Coolant tube            |
| 88  | Grain M6                |
| 89  | Mobile blade guard      |
| 90  | Ring seeger Ø 60E       |
| 91  |                         |
| 92  |                         |
| 93  | Tir rod support         |
| 94  | Washer                  |
| 95  | Screw M8                |
| 96  | Mobile guard rod        |
| 97  | Screw M8                |
| 98  | Washer                  |
| 99  | Bearing 6301            |
| 100 | GUK ring nut M17x1      |
| 101 | Worm screw              |
| 102 | Spacer                  |
| 103 | Spacer Ø 47             |
| 104 | Bearing 3204            |
| 105 | Ring DPSM 25-40-7       |
| 106 | Head gasket             |
| 107 | Front motor flange      |
| 108 | Motor shaft (rotor)     |
| 109 | Key                     |
| 110 | Washer                  |
| 111 | Stud bolt               |
| 112 | Nut                     |
| 113 | Motor and stator casing |
| 114 |                         |
| 115 |                         |
| 116 | Rear motor flange       |
| 117 |                         |

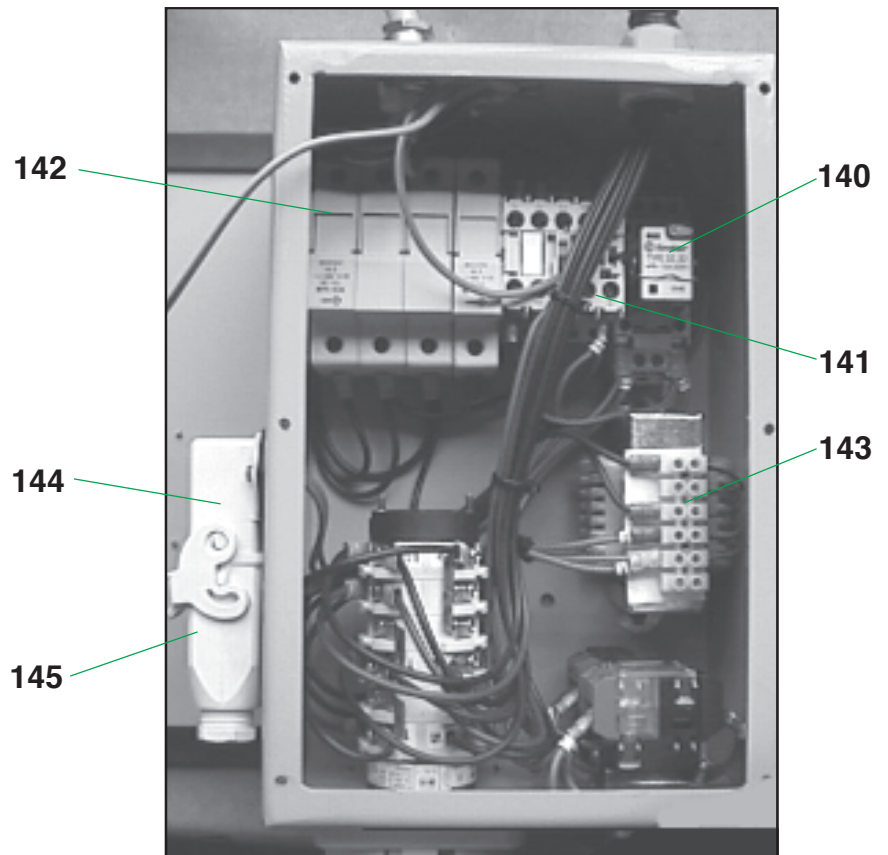
| REFERENCE N° | DESCRIPTION |
|--------------|-------------|
|--------------|-------------|

|     |                     |
|-----|---------------------|
| 118 |                     |
| 119 | Bearing 6205 2Z     |
| 120 | Ring seeger Ø 25E   |
| 121 | Fan                 |
| 122 | Screw M4            |
| 123 | Fan cover           |
| 124 | Bearing 609         |
| 125 | Pump connection box |
| 126 |                     |
| 127 | Screw M5            |
| 128 | Coolant pump        |
| 129 | Washer              |
| 130 | Screw M6            |



### LEGENDA

- 140 Auxiliary relay
- 141 Remote control switch
- 142 Fuse carrier
- 143 Transformer
- 144 Socket connector
- 145 Plug connector



### LEGENDA

- 146 Speed switch
- 147 Reset button
- 148 Emergency push button
- 149 Electric components box