



## 10 MACHINE COMPONENTS

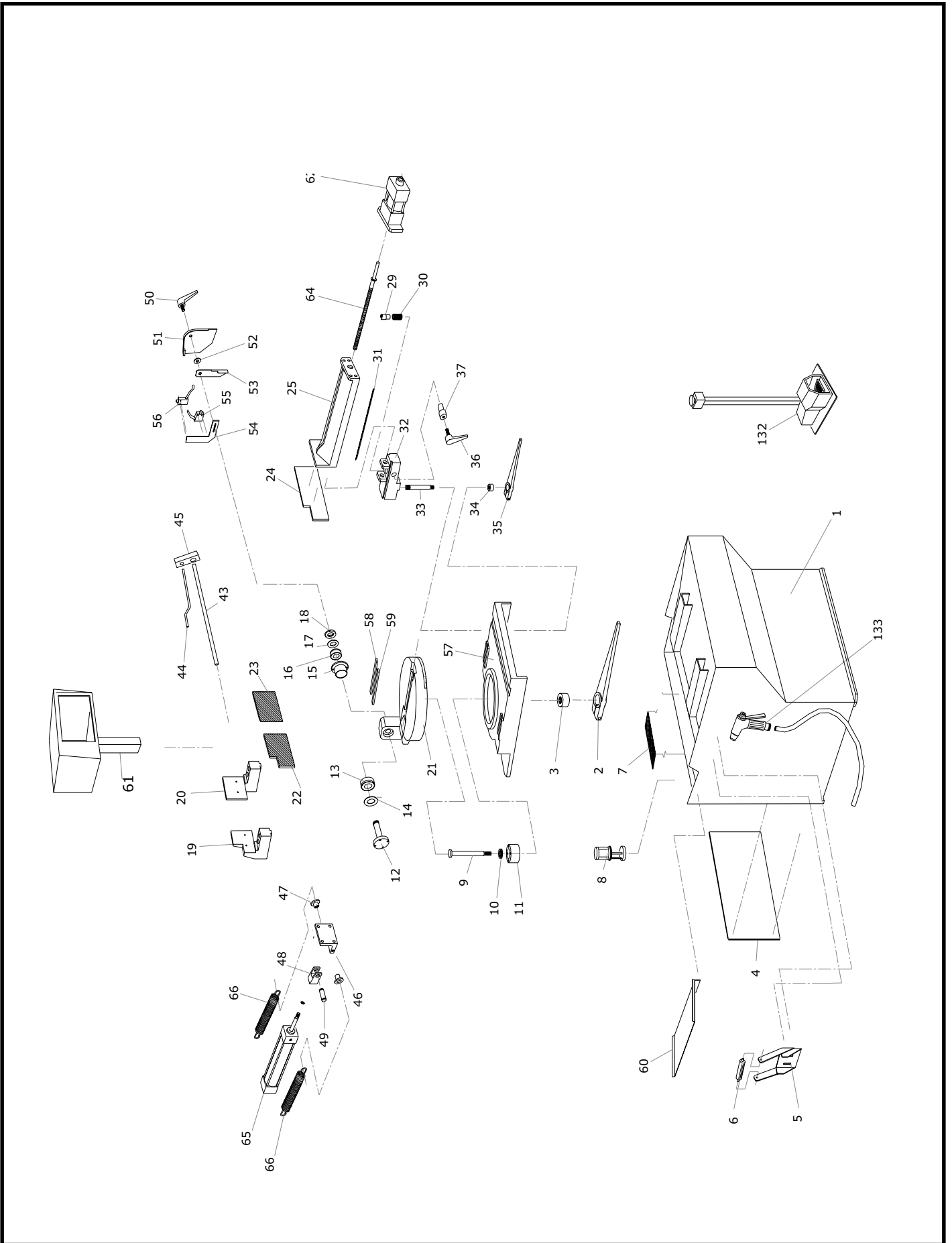
### 10.1 - List of spare parts

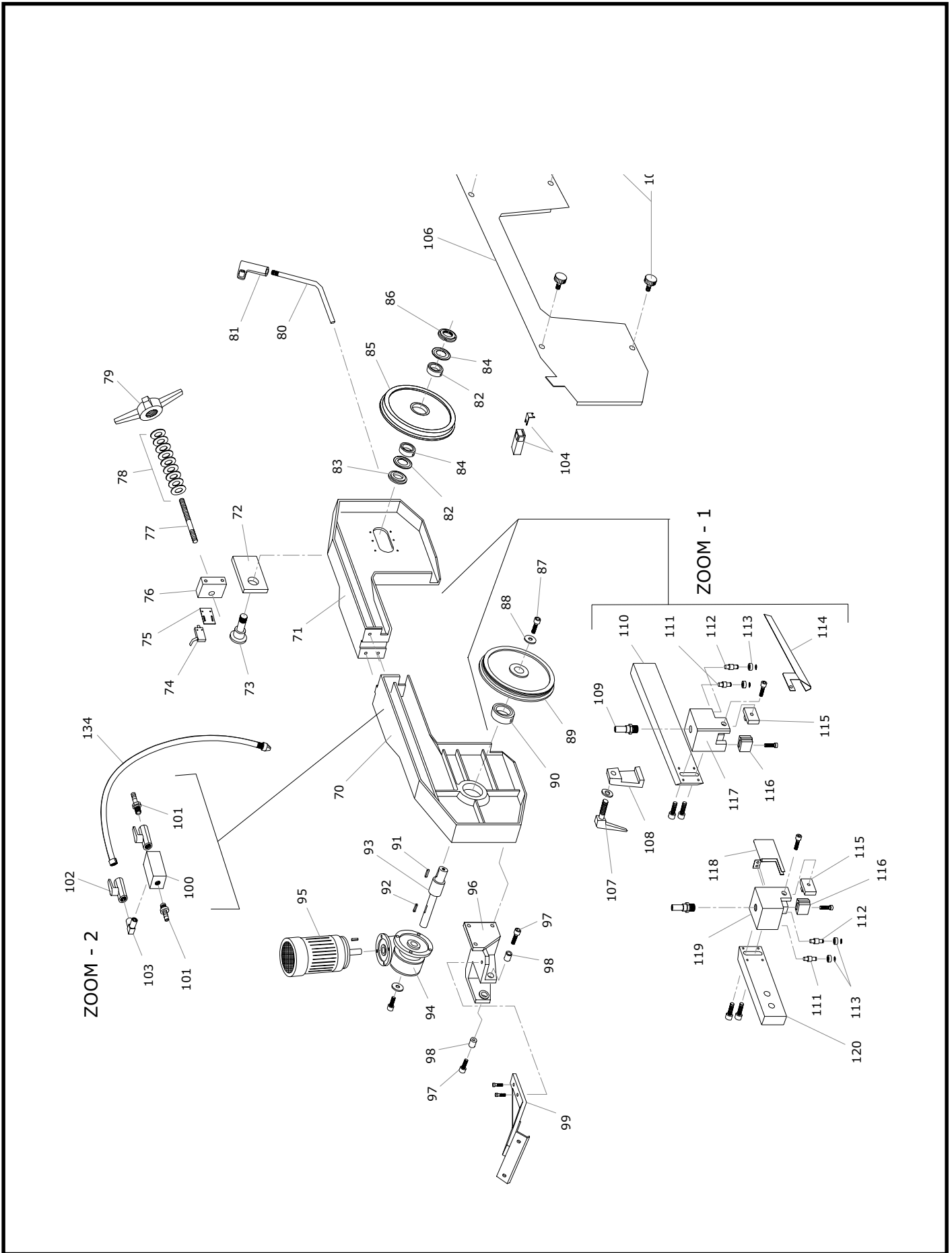
PART NUMBER	DESCRIPTION
1 .....	Base
2 .....	Arm locking lover
3 .....	Bush
4 .....	Rear protection
5 .....	Roller support
6 .....	Roller
7 .....	Crucible
8 .....	Electropump
9 .....	Pivot
10 .....	Bearing 51105
11 .....	Bush
12 .....	Hinge Pivot
13 .....	Bearing 32007 X
14 .....	Ring NILOS 32007 XAV
15 .....	Excentric bush
16 .....	Bearing 32007 X
17 .....	Ring Nilos 32007 XAV
18 .....	Ring nut GUK 35
19 .....	Left jaw support
20 .....	Right jaw support
21 .....	Rotation plate
22 .....	Right countervice jaw
23 .....	Left countervice jaw
24 .....	Vice jaw
25 .....	Vice
26 .....	
27 .....	
28 .....	
29 .....	Leadnut
30 .....	Spring
31 .....	Vice gib
32 .....	Vice support
33 .....	Pin
34 .....	Bush
35 .....	Vice level
36 .....	Handle
37 .....	Pin
38 .....	
39 .....	
40 .....	
41 .....	
42 .....	
43 .....	Bar stop rod
44 .....	Bar stop pointer
45 .....	Bar stop body
46 .....	Bracket
47 .....	spring bush
48 .....	Cylinder fork
49 .....	Pin
50 .....	Handle

PART NUMBER	DESCRIPTION
51 .....	Plate
52 .....	Washer
53 .....	Plate
54 .....	Microswitch plate
55 .....	Limit switch DW
56 .....	Limit switch UP
60 .....	Splash protection
61 .....	Electric box
62 .....	Vice cylinder
63 .....	Vice handwheel
64 .....	Vice thread
65 .....	Saw frame cylinder
66 .....	Saw frame spring
70 .....	Rear part of the sawframe
71 .....	Front part of the sawframe
72 .....	Blade tension plate
73 .....	Pivot
74 .....	Blade tension Microswitch
75 .....	Microswitch supporting plate
76 .....	Blade tension guide
77 .....	Blade tension pin
78 .....	Springs
79 .....	Blade tension handwheel
80 .....	Lever
81 .....	Handgripp
82 .....	Ring Nilos 32006 XAV
83 .....	Spacer ring
84 .....	Bearing 32006 X
85 .....	Return flywheel
86 .....	Ring nut Guk M 35
87 .....	Screw TE M 12
88 .....	Washer
89 .....	Motor flywheel
90 .....	Bearing 6208 2RS
91 .....	Wrench
92 .....	Wrench
93 .....	Pivot
94 .....	Reduction unit
95 .....	Electric motor
96 .....	Plate
97 .....	Screw TE M 12
98 .....	Bush
99 .....	Plate



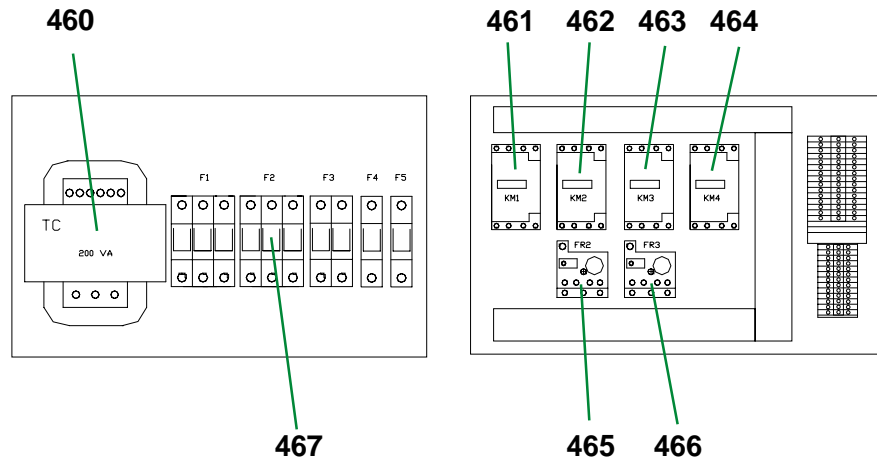
PART NUMBER	DESCRIPTION
100.....	Coolant distributor
101.....	Connection
102.....	Coolant tap
103.....	Connection
104.....	Microswitch
105.....	Knob
106.....	Cover
107.....	Handle
108.....	Plate
109.....	Connection
110.....	Blade-guide rod
111.....	Short eccentric pin
112.....	Long eccentric pin
113.....	Bearing 608 2RS
114.....	Blade-guide protection
115.....	Fixed blade-guide pad
116.....	Mobile blade-guide pad
117.....	Mobile blade-guide block
118.....	Blade protection
119.....	Fixed blade-guide block
120.....	Blade-guide rod
132.....	Foot control switch
133.....	Spray gun
134.....	Flexible pipe





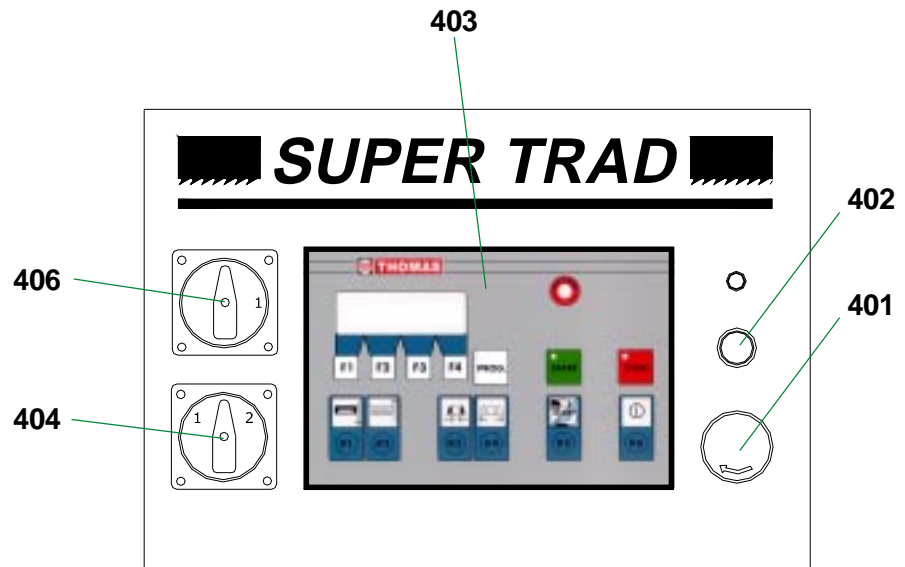
### WIRING

- 460 Transformer TC
- 461 Remote switch
- 462 Remote switch
- 463 Remote switch
- 464 Remote switch
- 465 Thermal relay FR2
- 466 Thermal relay FR3
- 467 Fuse cartridge



### CONTROL UNIT

- 401 Emergency push button
- 402 Line push button
- 403 Electronic Instrument
- 404 Commutator
- 405
- 406 Main switch



### HYDRAULIC PUMP

- 501 Electrovalve -Vice-
- 502 Electrovalve -Sawframe-
- 503 Oil level
- 504 Manometer
- 505 Motor

