



10 MACHINE COMPONENTS

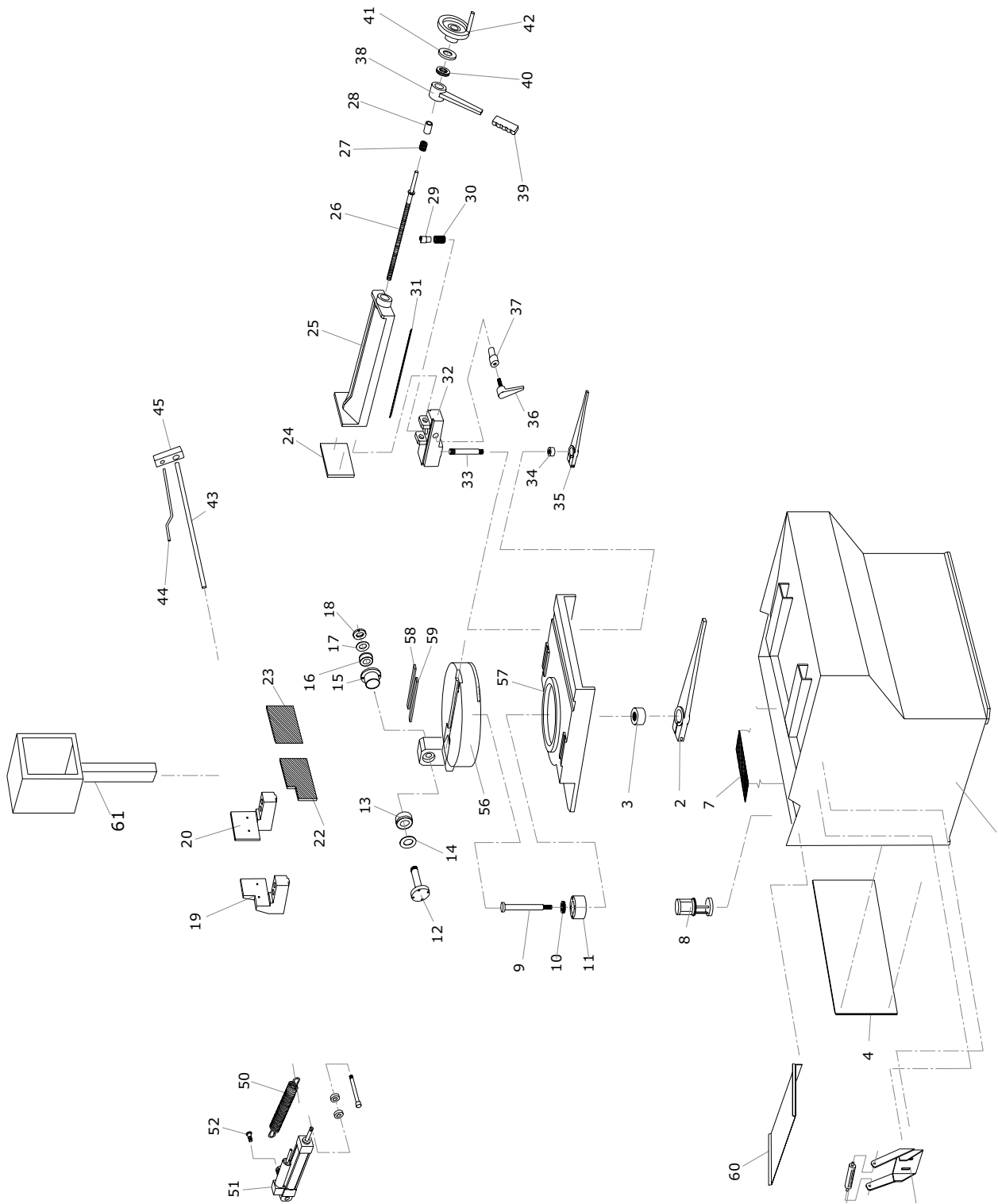
10.1 - List of spare parts

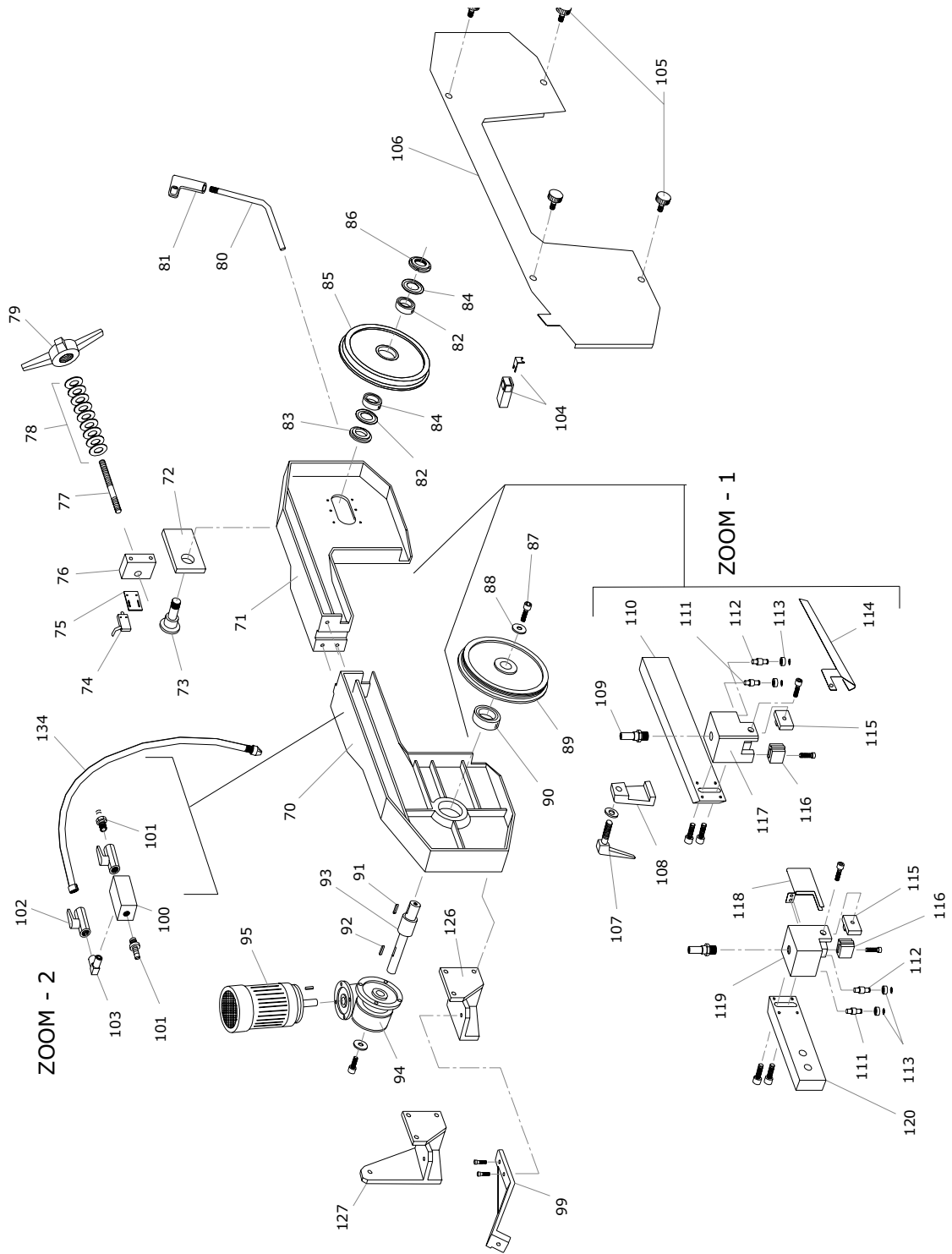
REFERENCE N°	DESCRIPTION
1	Base
2	Arm locking lever
3	Bush
4	Rear protection
5	Roller support
6	Roller
7	Crucible
8	Electropump
9	Pivot
10	Bearing 51105
11	Bush
12	Hinge pivot
13	Bearing 32007 X
14	Ring Nilos 32007 XAV
15	Eccentric bush
16	Bearing 32007 XAV
17	Ring Nilos 32007 XAV
18	Ring nut Guk M 35
19	Left jaw support
20	Right jaw support
21	Rotation plate
22	Left countervice jaw
23	Right countervice jaw
24	Vice jaw
25	Vice
26	Vice screw
27	Spring
28	Bush
29	Leadnut
30	Spring
31	Vice gib
32	Vice support
33	Pin
34	Bush
35	Vice lever
36	Handle
37	Pin
38	Rapid locking vice lever
39	Handle
40	Bearing AX 3047+CP
41	Bush
42	Vice handle
43	Bar stop rod
44	Bar stop pointer
45	Bar stop body
46	Bracket
47	Spring bush
48	Fork
49	Pin
50	Sawframe return spring

REFERENCE N°	DESCRIPTION
51	Brake cylinder
52	Cylinder articulation
57	Base
58	Right plate
59	Left plate
60	Splash protection
61	Electric box
70	Rear part of the sawframe
71	Front part of the sawframe
72	Blade tension plate
73	Pivot
74	Blade tension Microswitch
75	Microswitch supporting plate
76	Blade tension guide
77	Blade tension pin
78	Springs
79	Blade tension handwheel
80	Lever
81	Handle
82	Ring Nilos 32006 XAV
83	Spacer ring
84	Bearing 32006 X
85	Return flywheel
86	Ring nut Guk M 35
87	Screw TE M 12
88	Washer
89	Motor flywheel
90	Bearing 6208 2RS
91	Wrench
92	Wrench
93	Motor flywheel shaft
94	Reduction unit
95	Electric motor
99	Plate
100	Coolant distributor
101	Connection
102	Coolant tap
103	Connection
104	Microswitch
105	Knob
106	Cover
107	Handle
108	Plate
109	Connection



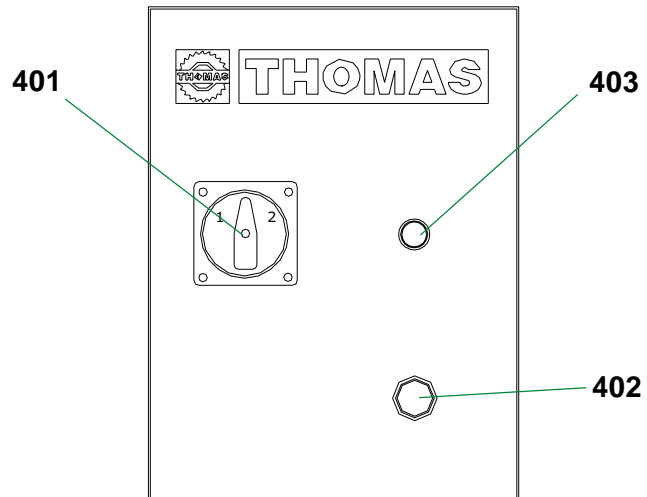
PART NUMBER	DESCRIPTION
110	Blade-guide rod
111	Short eccentric pin
112	Long eccentric pin
113	Bearing 608 2RS
114	Blade-guide protection
115	Fixed blade-guide pad
116	Mobile blade-guide pad
117	Mobile blade-guide block
118	Blade protection
119	Fixed blade-guide block
120	Blade-guide rod
121	Blade cleaning brush
122	Brush support
123	Bearing 626 2RS
124	Bush
126	Spring support
127	Cylinder support (optional)





KEY

- 401** Blade cutting switch
- 402** Reset push button
- 403** Pilot lamp



KEY

- 410** Transformer
- 411** Auxiliary relay
- 412** Remote control-switch
- 413** Fuse Cartridge (FU1)
- 414** Fuse Cartridge (FU2)

