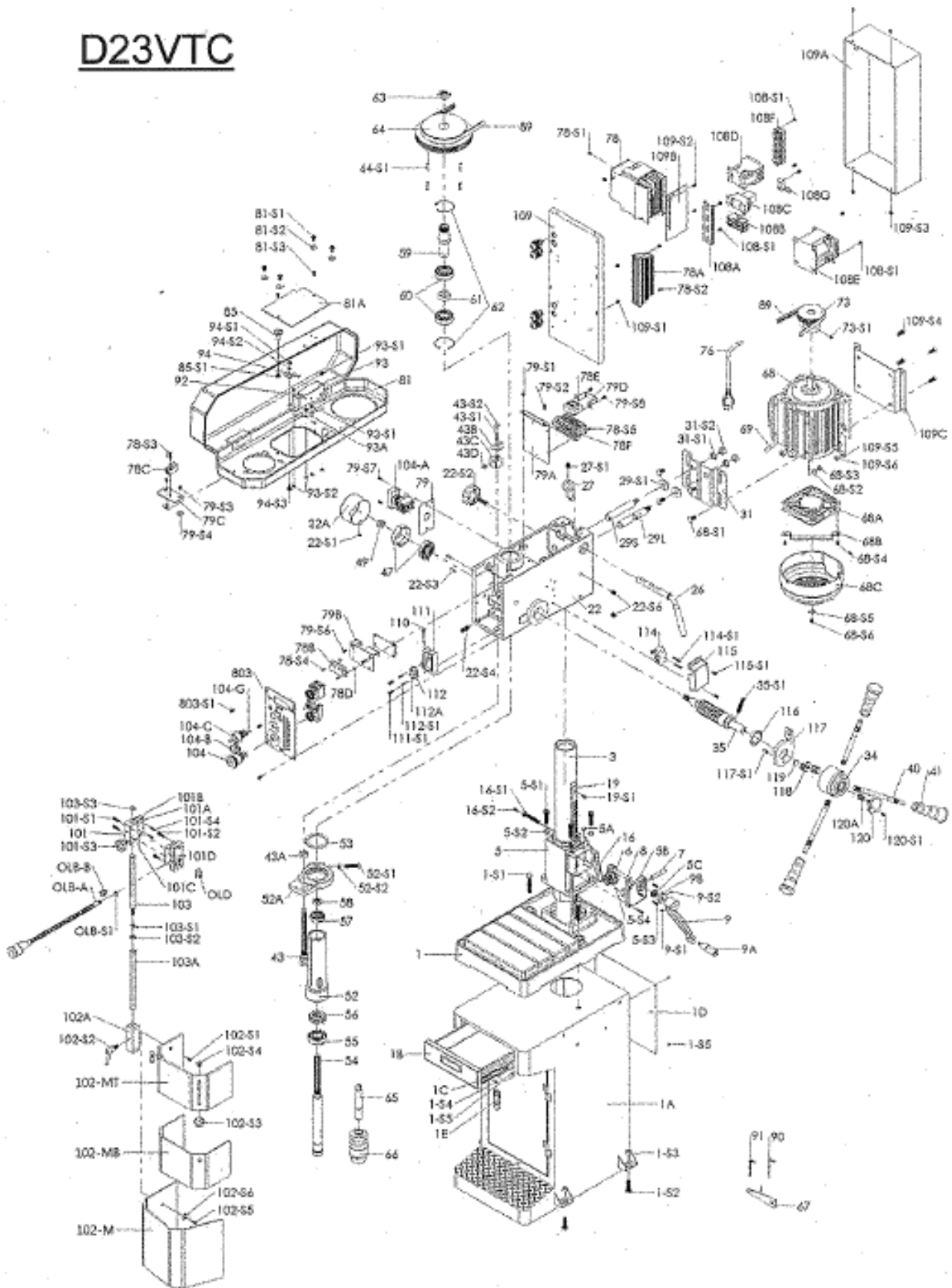


ONDERDEEL TEKENING

D23VTC



D23VTC

1	BASE
1A	STAND
1B	DRAWER
1C	SLIDE
1D	REAR COVER
1E	LATCHES
1-S1	HEX BOLT
1-S2	HEX BOLT
1-S3	HEX NUT
1-S4	SELF-TAPPING SCREWS
1-S5	SCREW
3	COLUMN
5	COLUMN BRACKET
5A	OIL CUP
5B	GEAR BRACKET
5C	THRUST BEARING
5-S1	CAP SCREW
5-S2	SPRING WASHER
5-S3	CAP SCREW
5-S4	SET SCREW
6	GEAR
7	SHAFT
8	WORM
9	TABLE HANDLE
9A	HANDLE BOLT
9B	THRUST OF FIXED BLOCK
9-S1	SET SCREW
9-S2	SET SCREW
16	CLAMP HANDLE
16-S1	HEX BOLT
16-S2	CAP SCREW
19	RACK
19-S1	FLAT HEAD SCREW
22	HEAD BODY
22A	FEED SHIFT COVER
22-S1	SCREW
22-S2	LOCK KNOB
22-S3	PIN
22-S4	SET SCREW
22-S6	SET SCREW
26	SHIFTER BAR
27	SHIFTER
27-S1	SET SCREW
29L	SLIDE BAR(L)
29S	SLIDE BAR(S)
29-S1	WASHER
31	MOTOR BASE
31-S1	SPRING WASHER
31-S2	HEX NUT
34	HANDLE BODY
35	FEED SHAFT
35-S1	SET SCREW

40	FEED HANDLE
41	GRIP
43	DEPTH ROD
43A	HEX NUT
43B	LIMIT PLATE
43C	POSITION SET BRACKET
43D	DEPTH SCALE
43-S1	SCREW
43-S2	E TYPE BUCKLE
47	SPRING CAP
49	LOCK NUT
52	QUILL
52A	SLEEVE
52-S1	HEX BOLT
52-S2	SPRING WASHER
53	RUBBER WASHER
54	SPINDLE
55	BALL BEARING
56	THRUST BEARING
57	BALL BEARING
58	SPINDLE NUT
59	SPINDLE SLEEVE
60	BALL BEARING
61	SPACER
62	SNAP RING
63	PULLEY NUT
64	SPINDLE PULLEY
64-S1	PIN
65	TAPER ARBOR
66	DRILL CHUCK
67	DRILL SHIFTER
68	MOTOR
68A	FAN
68B	FAN BOARD
68C	MOTOR COVER
68-S1	CARRIAGE BOLT
68-S2	WASHER
68-S3	HEX NUT
68-S4	SCREW
68-S5	WASHER
68-S6	SCREW
69	MOTOR WIRE
73	MOTOR PULLEY
73-S1	SET SCREW
76	WIRE
78	SPEED CONTROLLER (INVERTER)
78A	BRAKING RESISTOR
78B	RPM DISPLAY UNIT
78C	SPEED SENSOR
78E	TRANSFORMER
78F	SOCKET
78-S1	SCREW

78-S2	SCREW
78-S3	SCREW
78-S4	SCREW
78-S5	SCREW
79	SWITCH BOARD
79A	SWITCH BOARD
79B	SWITCH BOARD
79C	SWITCH BOARD
79D	SWITCH BOARD
79-S1	SCREW
79-S2	SCREW
79-S3	SCREW
79-S4	WASHER
79-S6	SCREW
79-S7	SCREW
79-S8	SCREW
81	PULLEY COVER
81A	PULLEY BOARD COVER
81-S1	SCREW
81-S2	WASHER
81-S3	SCREW
85	PULLEY COVER KNOB
85-S1	SCREW
89	V-BELT
90	HEX WRENCH
91	HEX WRENCH
92	MICRO SWITCH
93	MICRO SWITCH BOX
93A	SPRING SHEET
93-S1	SCREW
93-S2	HEX NUT
94	CLUTCH
94-S1	HEX NUT
94-S2	SPRING WASHER
94-S3	SCREW
101	MICRO SWITCH BRACKET
101A	MICRO SWITCH
101B	MICRO SWITCH BOARD COVER
101C	MICRO SWITCH WIRE
101D	MICRO SWITCH BASE
101-S1	SCREW
101-S2	SCREW
101-S3	LOCK KNOB
101-S4	SCREW
102-M	SAFETY GUARD
102-MT	SAFETY GUARD(TOP)
102-MB	SAFETY GUARD(BOTTOM)
102A	SAFETY GUARD SLIDE
102-S1	SCREW
102-S2	LOCK KNOB
102-S3	LOCK KNOB
102-S4	SCREW
102-S5	SCREW

102-S6	WASHER
103	BRACKET ROD
103A	LOWER BRACKET ROD
103-S1	HEX NUT
103-S2	SPRING WASHER
103-S3	C-RING
104	EMERGENCY STOP SWITCH
104-A	DOUBLE SWITCH
104-B	SPEED-ADJUSTING KNOB
104-C	CHANGE SWITCH(Drill/Tap)
104-G	FAULT LAMP
108A	ALUMINUM STRIP
108B	FUSE STE
108C	CONTACTOR RELAY
108D	MAGNETIC SWITCH
108E	TRANSFORMER
108F	SOCKET
108G	GROUNDING
108-S1	SCREW
109	SWITCH BOARD
109A	GENERAL SWITCH BOX
109B	SWITCH BOARD (INVERTER)
109C	SWITCH BOARD
109-S1	SCREW
109-S2	SCREW
109-S3	SCREW
109-S4	HEX BOLT
109-S5	WASHER
109-S6	HEX NUT
110	STEEL BAR
111	MICRO SWITCH PLATE
111-S1	SCREW
112	MICRO SWITCH BODY
112A	MICRO SWITCH TRIGGER
112-S1	SCREW
114	MICRO SWITCH
114-S1	SCREW
115	MICRO SWITCH COVER
115-S1	SCREW
116	THRUST BEARING
117	TAPPING SENSOR
117-S1	PIN
118	SPRING
119	MAGNET
120	ORIENTATION BOLT
120A	SPRING
120-S1	FLAT HEAD SCREW
803	SWITCH COVER
803-S1	SCREW
OLB-A	LED Work Lamp
OLB-B	LED Work Lamp Switch
OLB-S1	HEX NUT
OLD	LED DRIVER